

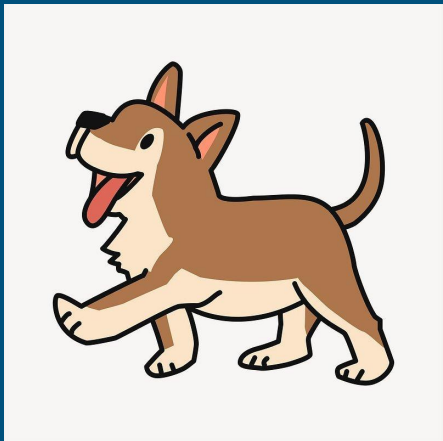


# Elkonin Box Templates

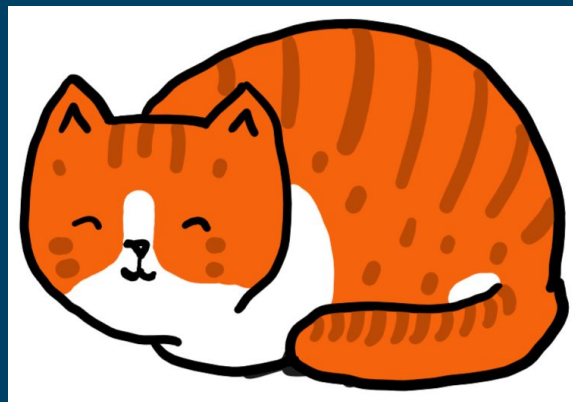


# Directions

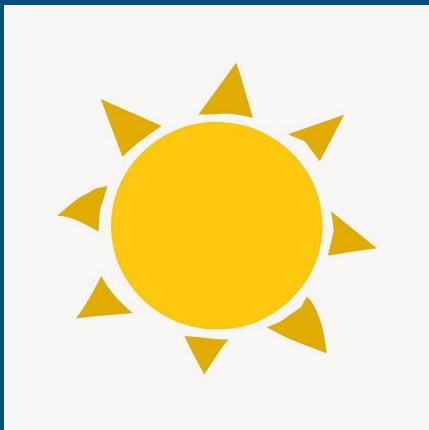
1. Use the template on the following slides or draw your own on a whiteboard!
2. Say a word with 2-4 phonemes (sounds)
3. Break apart (segment) the whole word into its individual sound parts
4. Push one bingo chip (or other similar manipulative) up into a box per sound in the word  
\*\*(can then graduate to letter tiles, and writing in the letters)



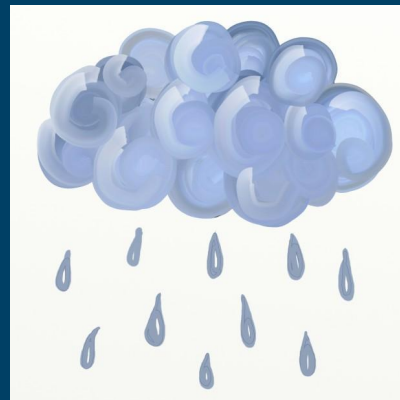
--	--	--



--	--	--



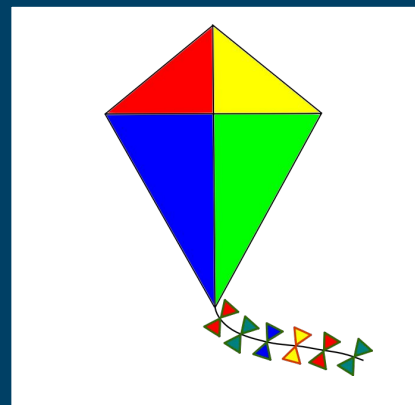
--	--	--



--	--	--



--	--	--



--	--	--